

# Environmental Management

The objective of the Dowa Group's environmental preservation activities is to combine the reduction of environmental impact in the Group's own business activities with initiatives to contribute to the environment and society through core businesses. In other words, we believe we should create economic value in tandem with environmental preservation activities.

While promoting environmental management, the Dowa Group will contribute to the creation of a sustainable society.

## Environmental Management Organization

The CSR Division of Dowa Holdings Co., Ltd., the Group's holding company, and the planning departments of each operating company, which carry out environmental preservation activities, cooperatively carry out the Dowa Group's environmental management activities. Dowa Holdings performs the functions of adjustment and coordination among the various operating companies while taking responsibility for the environmental management and compliance management of the entire Dowa Group.

## Status of Introduction of Environmental Management Systems

In the Dowa Group, the main 27 manufacturing bases in Japan (and one overseas base) have acquired ISO 14001 certification. Furthermore, Dowa-Tsuun Co., Ltd. has obtained Green Management Certification for the promotion of environmental preservation in the truck transportation business.

## Implementation of Environmental Audits

To ensure the appropriate implementation of environmental management, the Company periodically carries out internal audits and external audits. In addition, we hold courses for the development of internal auditors as part of efforts to foster and increase the number of internal auditors.

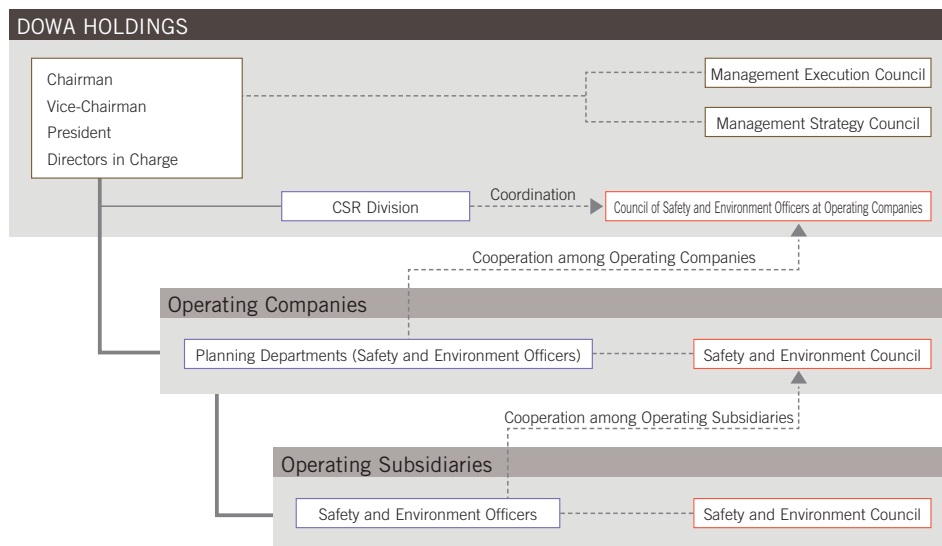
## Environmental Education

By actively undertaking educational activities regarding the Environmental Management System (EMS), we aim to enhance the environmental awareness of employees and strengthen their willingness and capacity to reduce environmental impact. Moreover, besides ISO 14001 auditor training, we are also actively conducting environmental education activities at various operating bases. These include the holding of an energy-saving technology course (New Nippon Brass Co., Ltd.) and an external transportation risk reduction/driver study group (Eco-System Recycling Co., Ltd. East Japan) as well as participation in the Okayama City Eco-Technology Seminar (Eco-System Okayama Co., Ltd.).

## Research & Development

The Dowa Group regards the environmental sector as a major pillar of its business operations. We are not only reinforcing soil remediation as well as Environmental Management & Recycling, which are currently core businesses, but also actively promoting environmental research and development aimed at the creation of advanced, original technologies.

## ENVIRONMENTAL MANAGEMENT ORGANIZATION



For more detailed information about Dowa's CSR activities, please visit the Dowa website at <http://www.dowa-csr.jp/csr2008/html/en/>.

## Contribution to Society

To contribute to the sustainable development of society and become a Company whose existence is desired by regional communities, the Dowa Group's nationwide operating bases and affiliated companies are undertaking social contribution activities tailored to the characteristics of their respective regions, based on the "Dowa Group's Values and Standards of Conduct."

In fiscal 2008, we carried out the following main initiatives.

### Okayama City Lake Kojima Flower Corridor Project

In April 2007, we launched the Lake Kojima Flower Corridor Project to plant 3,000 Kawazu cherry trees along the shore and in the vicinity of Lake Kojima. The lake was created through the reclamation of Kojima Bay, about which Baron Denzaburo Fujita, the founder of Dowa, felt great enthusiasm.

In fiscal 2008, we held tree planting ceremonies for the 1,700 cherry trees previously planted together with all the supporters of this project on three occasions, in June, August and September. At the tree planting festival held in December, about 1,000 people including supporters and their family members took part. They planted 237 Kawazu cherry trees and enjoyed various events such as the Kojimako Hana Kairo dance.

At present, there are more than 3,000 supporters and the target of planting 3,000 trees has been accomplished (3,265 trees as of March 31, 2009).



### Zipangu and El Dorado Land of Gold Exhibition

The Dowa Group was a special sponsor of the Zipangu and El Dorado Land of Gold Exhibition held at the National Museum of Nature and Science from July to September 2008 to commemorate the 100th anniversary of diplomatic relations between Japan and Colombia. The Dowa Group provided exhibits utilizing actual objects and images regarding the problem of natural resource depletion and metal recycling technologies, which put the spotlight on gold as a raw material, as well as rare metals, which are valued in a similar way to gold nowadays. Owing partly to the summer holiday period, a large number of visitors, including elementary and junior high school students, viewed the exhibition.



### Dowa Cup Junior Cross Country Ski Festival

In February 2009, we held the Dowa Cup Towada Lake junior cross country ski festival in Kosaka, Akita Prefecture. In addition to the previous three ski races of sprint, cross country and sit skiing (skiing on a wheelchair using only one's arms), we conducted an open race to enable elementary and junior high school students with little experience of skiing to feel the excitement of competitive skiing. This year, which marked the 19th such event, a total of 691 elementary and junior high school students took part.

Furthermore, as this competition has been designated as a selection race in the Winter Youth Olympics to be held in Austria in 2012, the Dowa Cup will become an increasingly important competition for children who will play a leading role in the future.

